

NOTE 1) Numbers of the band switch (S1~9) are as follows: 1. LW 2. MW 3. Marin 4. SW  
 2) Radio-D.F. switch is shown in Radio position.  
 3) S11 shows B.F.O. switch.

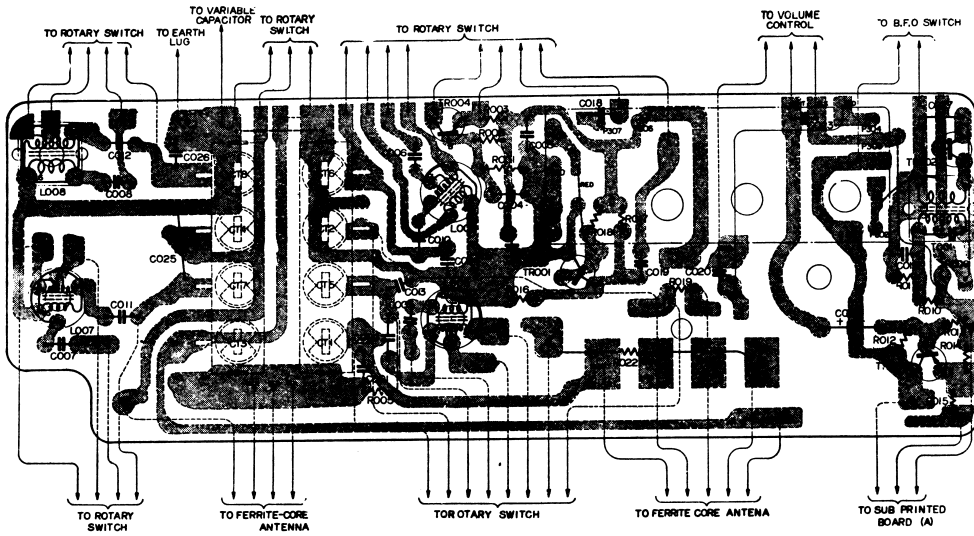


FIG. 1—ETCHED MAIN PRINTED CIRCUIT (TOP VIEW)

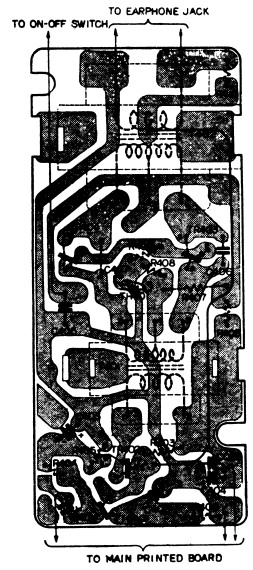


FIG. 2—ETCHED SUB-PRINTED CIRCUIT I (TOP VIEW)

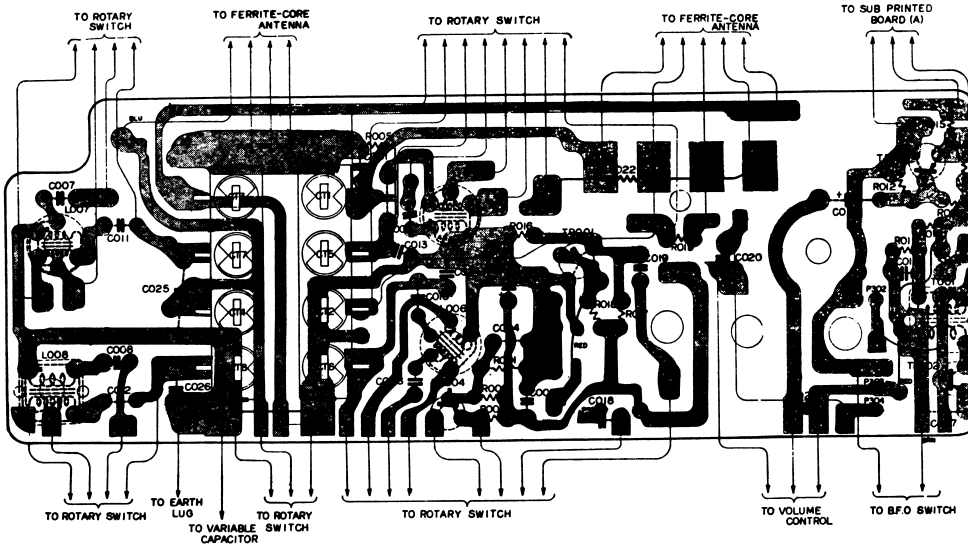


FIG. 3—ETCHED MAIN PRINTED CIRCUIT (BOT. VIEW)

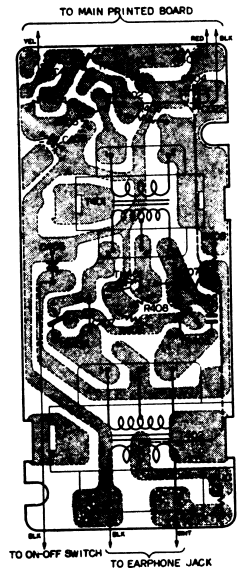


FIG. 4—ETCHED SUB-PRINTED CIRCUIT I (BOT. VIEW)

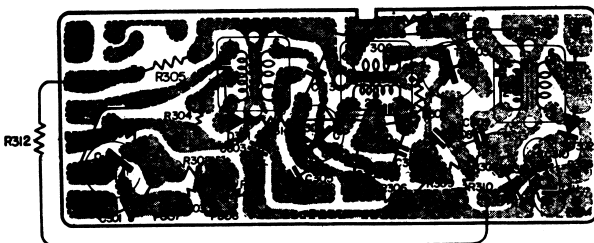


FIG. 5—ETCHED SUB-PRINTED CIRCUIT II (TOP VIEW)

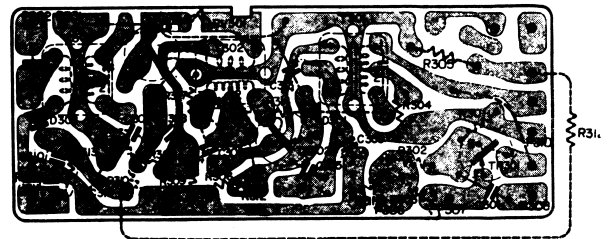
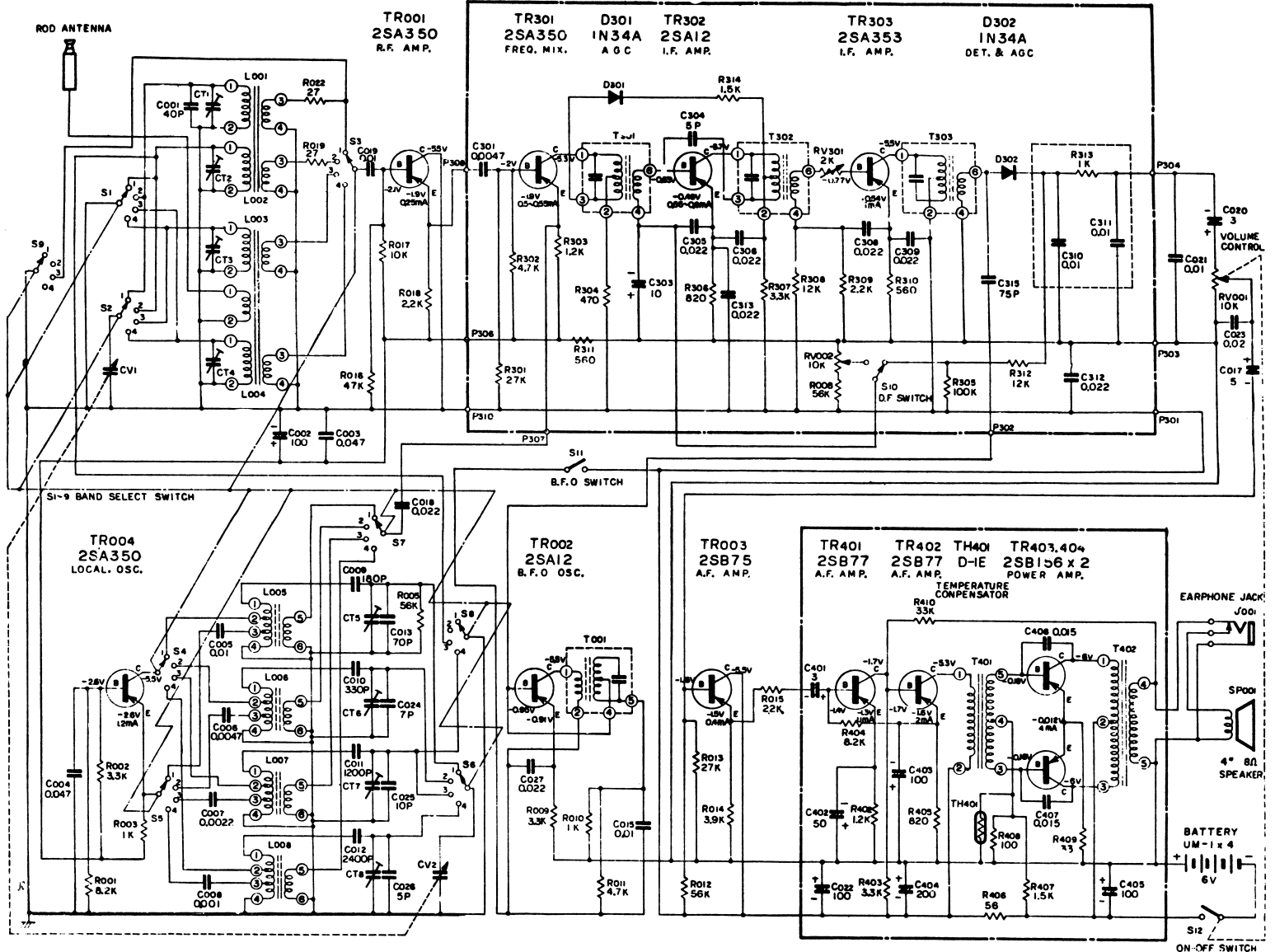


FIG. 6—ETCHED SUB-PRINTED CIRCUIT II (BOT. VIEW)



NOTE 1) Numbers of the band switch (S1~9) are as follows: 1. LW 2. MW 3. Marin 4. SW  
 2) Radio-D.F. switch is shown in Radio position.  
 3) S11 shows B.F.O. switch.